



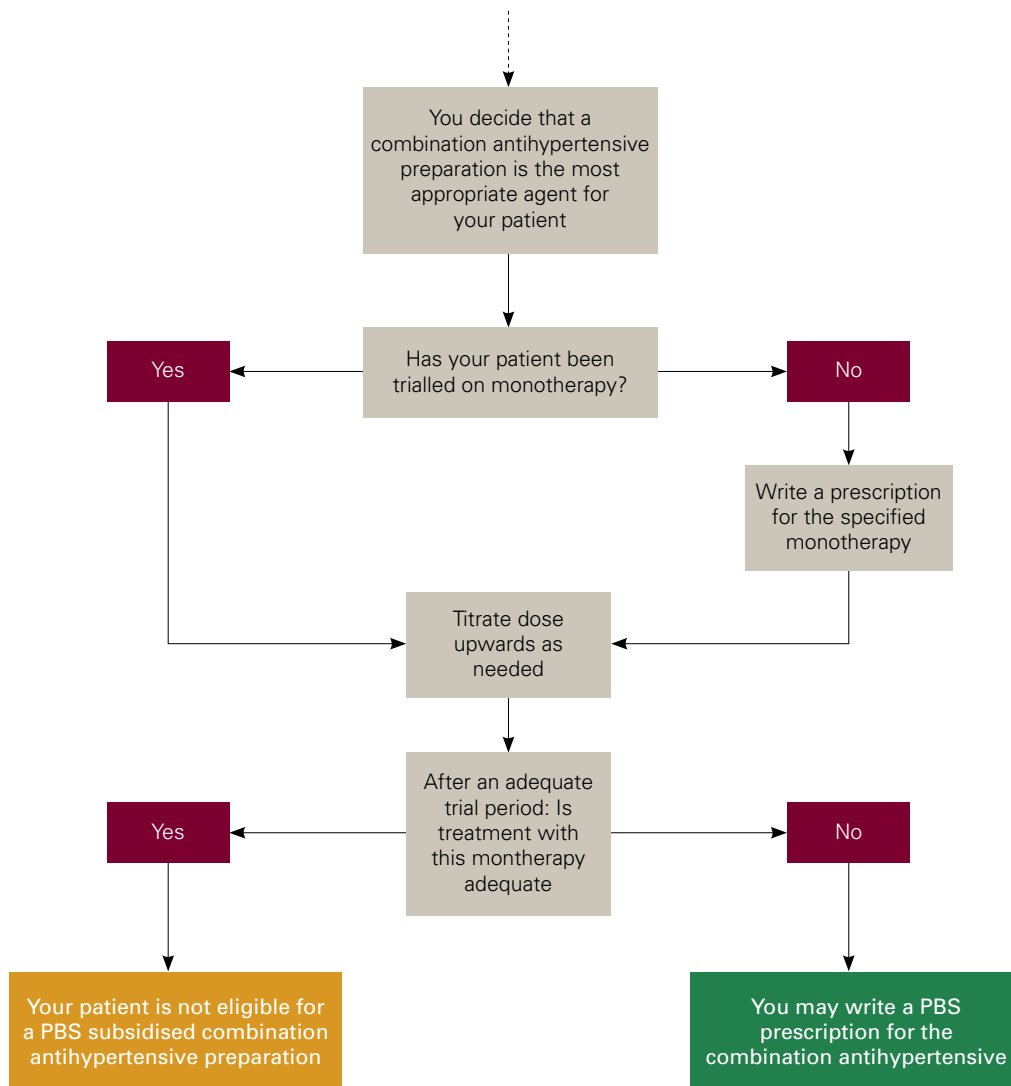
# Combination antihypertensives on the PBS

This information sheet can be used as a prescribing aid for combination antihypertensive medications on the Pharmaceutical Benefits Scheme (PBS).

If you feel a combination antihypertensive is the most appropriate treatment for your patient please use the following flow charts as a guide to ensure your patient is eligible for a PBS subsidy.

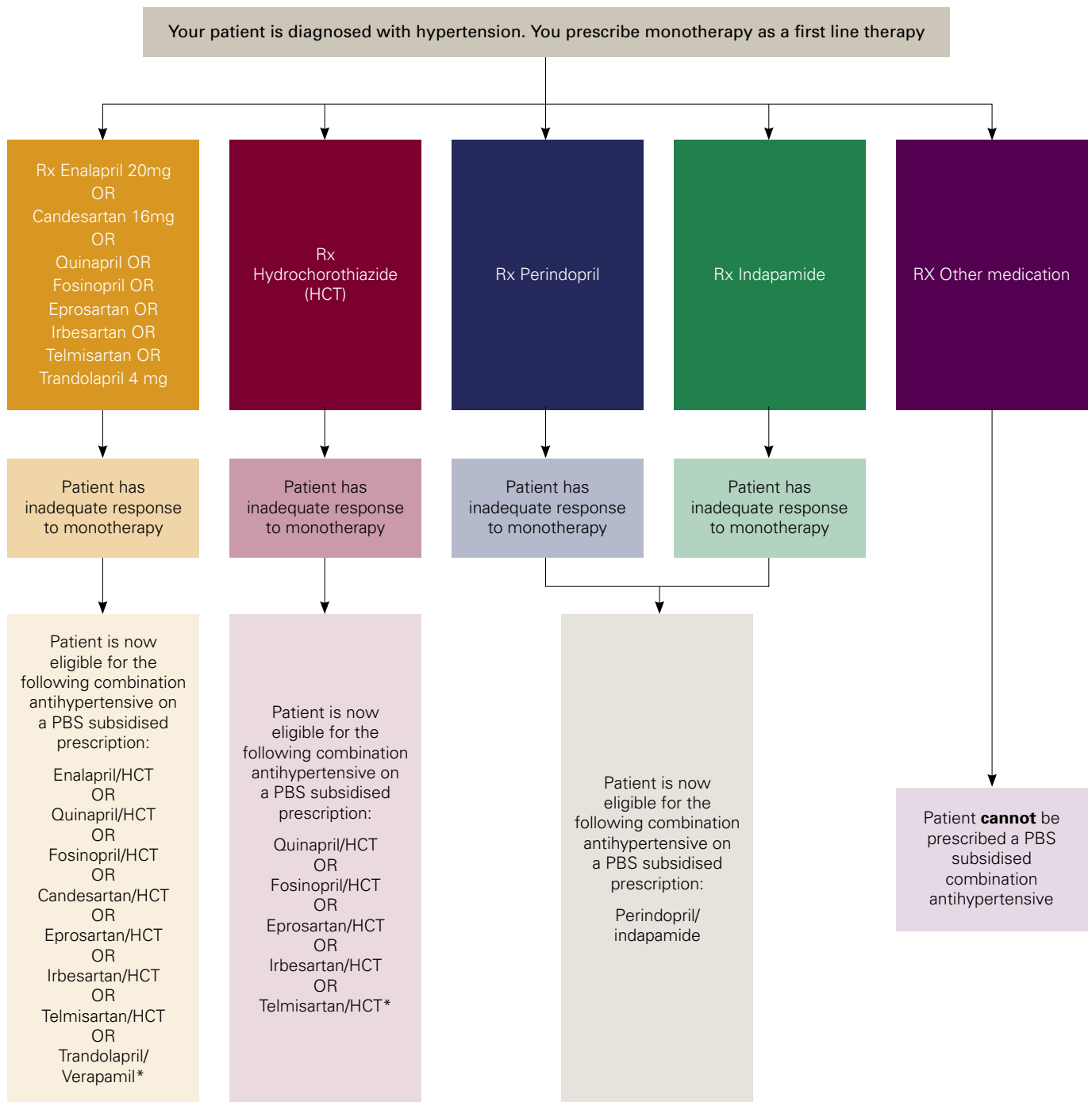
## What you need to know:

- Before prescribing a combination antihypertensive preparation on the PBS, your patient must have had an **inadequate** response to a reasonable trial of monotherapy. (The Schedule specifies which monotherapy can be used and in some cases specifies the required strength of monotherapy).
- Your patient's treatment must not be changed from one combination antihypertensive preparation to another unless a reasonable trial of the specified monotherapy (and dose) has proven inadequate.
- You must write a non-PBS prescription for patients who do not meet the restriction criteria.



## Choice of monotherapy

The following flow chart can be used to guide your choice of monotherapy. This will determine which combination antihypertensive preparation can be prescribed on the PBS. Please consult the *Schedule of Pharmaceutical Benefits* for the full restriction criteria.



\* The ACE inhibitor or Angiotensin II Receptor Antagonist in the combination product must be the same as the antihypertensive prescribed earlier in the treatment process.

Medicare Australia recognises that medical practitioners remain responsible for the choice of treatment for their patients.

If you wish to prescribe these medications for patients who do not meet the PBS restriction criteria, you must write a non-PBS prescription.